

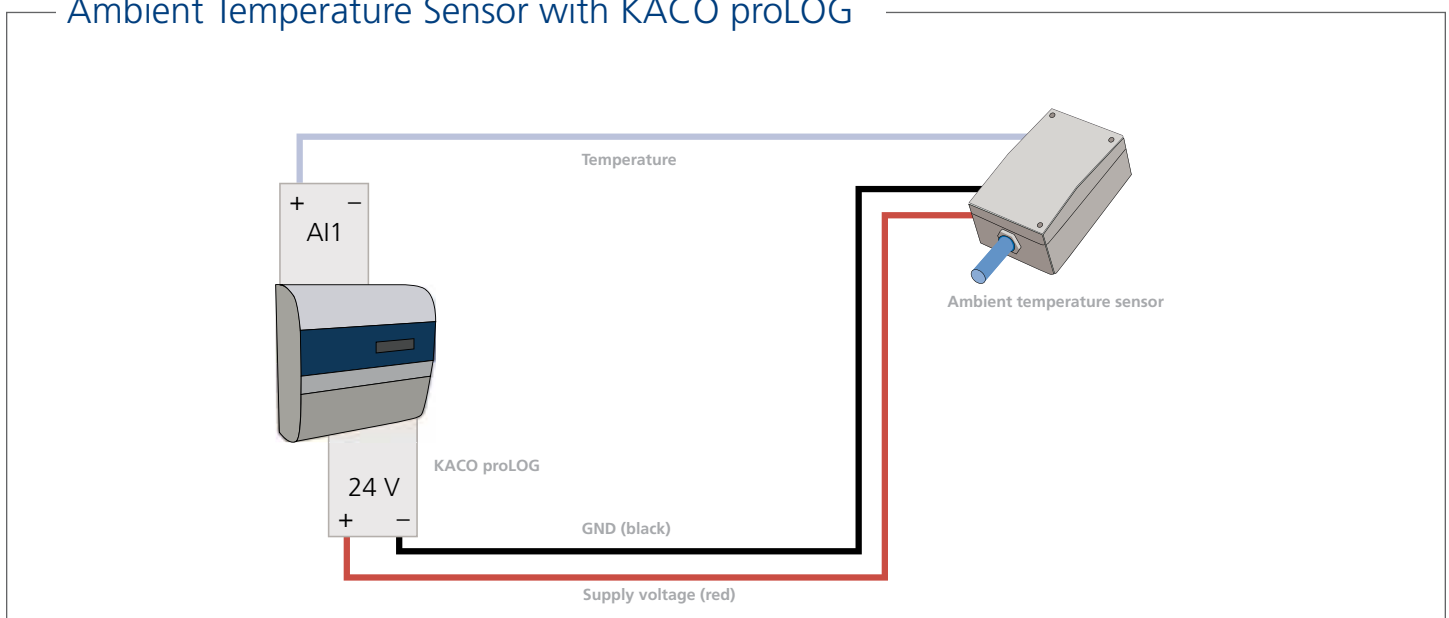


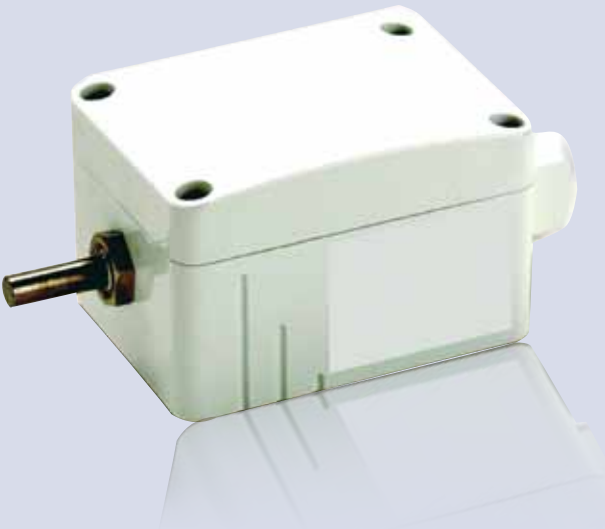
Ambient Temperature Sensor

Ambient Temperature Sensor with integrated temperature converter

The PT1000 ambient temperature sensor measures the ambient temperature. The sensor measures the ambient temperature using a PT1000 measuring resistance. Temperatures between -50 and 50°C are converted to voltage values between 0 and 10 V.

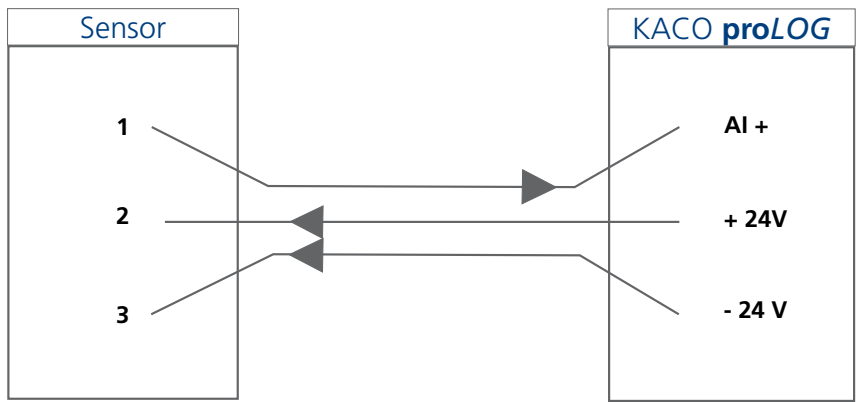
Ambient Temperature Sensor with KACO proLOG





Technical Data		Ambient Temperature Sensor	
Input Levels			
Measuring elements	PT1000		
Temperature range	-58 °F to 122 °F (-50 °C to +50 °C)		
Load	At least 5 kΩ		
Accuracy	Typically +/- 1 % of the measurement range		
DC operating volume	15 V to 24 V		
DC power consumption	Max. 12 mA/24 V _{DC}		
W x H x D	2.3 x 1.8 x 4.1 in (58 x 45.5 x 103 mm)		
DC output	0 V to 10 V		

Wiring Diagram



KACO Sensor and Monitoring Options

